

## WATER-WISE GRASSES FOR TURF



Scotts Valley Water District  
2 Civic Center Drive, SV, 95066  
www.svwd.org · 831.438.2363

**Blue grama** (*Bouteloua gracilis*) - Blue grama is a long-lived, warm season grass native to North America. Blue grama grows on a wide array of topographic positions, and in a range of well-drained soil types, from fine to coarse textured. They employ an opportunistic water-use strategy, rapidly using water when available, and becoming dormant during less favorable conditions. Established plants are grazing-, cold-, and drought-tolerant. Plant height at maturity ranges from 15-30 cm.



**California Fescue** (*Festuca californica*) Large, evergreen bunchgrass. Grows 2 - 5' high and 3' wide. Foliage arches gracefully upwards and outwards. Flower spikes reach 3' above the leaves. Plant in full sun or partial shade. Stays green in the summer. Good under oaks and as a backdrop border to lower growing grasses in a meadow. Cut back to ground in late fall. Infrequent but deep watering suggested.



**Red Fescue** (*Festuca rubra*) - Red Fescue is found worldwide and can tolerate many habitats and climates; it generally needs full sun to thrive. It is a nutritious and palatable forage grass for domestic and wild animals. It is used as a turfgrass and groundcover.



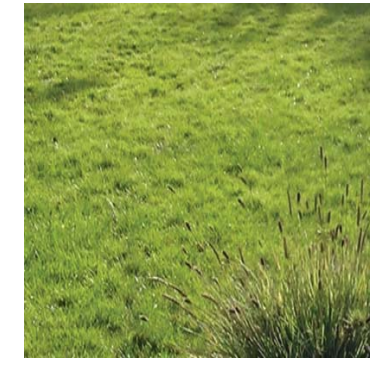
**California Meadow Sedge** (*Carex pansa*) - A small evergreen sedge growing to 3-6" tall and spreading by rhizomes to form dense colonies. Tolerates light traffic and can be used as a lawn substitute in coastal sandy soils. Grows equally well in full sun or light shade under trees. Reasonably drought tolerant on the coast, but needs summer water to stay green in hotter inland areas. Native to coastal plains and sand dunes.



**Tufted Hair Grass** (*Deschampsia cespitosa*) - A cool-season, mostly evergreen grass. Forms dense tufts of dark green foliage 1 - 3' tall and wide. Flowers - loose, airy panicles arch upward and outward from the plant 2 - 3' above the foliage. Grows best in moist rich soil in light shade. Effective planted with ferns and other moisture loving plants. Occurs naturally in wet sites, meadows, stream banks. To maintain a pleasing outline and symmetry, prune occasionally. Water once a week.



**Junegrass** (*Koeleria macrantha*) - This is a short, tuft-forming perennial grass, reaching heights from 20 to 70 centimeters. The leaves are basal and up to about 20 centimeters long. The inflorescence is nearly cylindrical and may taper somewhat toward the tip. It holds shiny tan spikelets which are sometimes tinted with purple, each about half a centimeter long.



Thank you to Elkhorn Nursery and Soquel Creek Water District for images and information.