



# Severe Service Valves

## Product Data Sheet

- Ceramics withstand severe abrasion. Offering as much as 30X that of alloy materials.
- Process media is prevented from contacting alloy body that is fully lined with structural ceramics.
- Ceramics are nearly universally chemical resistant.
- Full control options, including 4-20mA positioner and actuator.
- Multiple ANSI and DIN flange standards available. ANSI 150, 300 and 600 classes are also available.
- Ceramic seat materials are selected on an application basis. Options include Alumina, Zirconia, Silicon Carbide, and others.
- Seat and Ball are lapped together in matched sets to insure positive sealing.
- Materials are selected on an application basis. Options include Super Duplex Stainless Steel, Hastelloy, Stainless Steel Cast steel and others.

### Used in these Applications:

- Flue Gas Desulfurization (FGD)
- Slurry Control Applications
- Pneumatic transportation of powders
- Chemical Production

## Style Q Ceramic Lined Ball Valve



## SK Valve USA

Buffalo, NY

Ph: (716) 795-8111 FAX: (716) 799-0969

[www.skvalveusa.com](http://www.skvalveusa.com)

Q 9/14/09



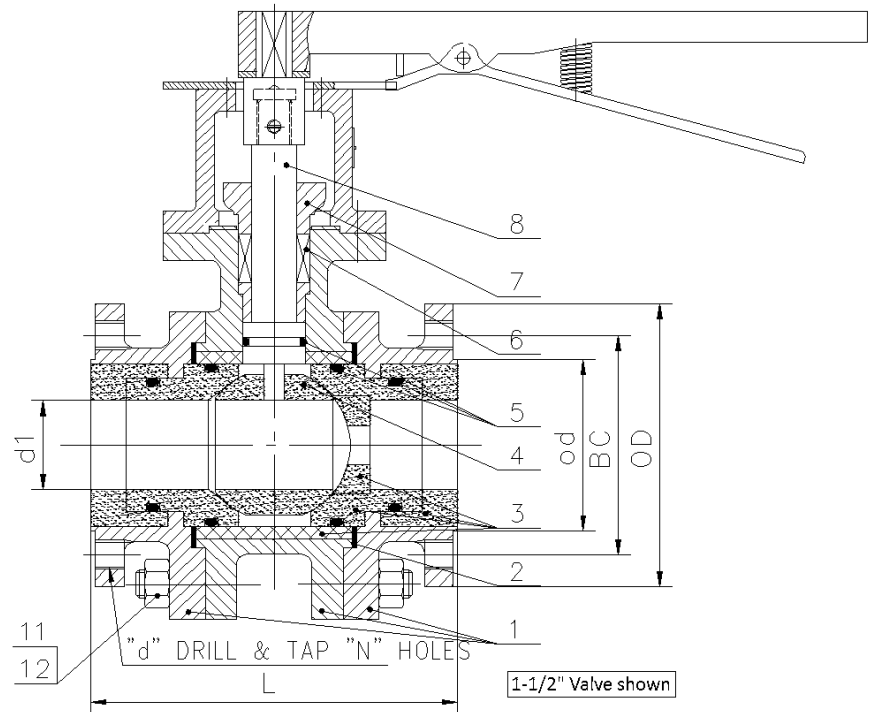
# Severe Service Valves

## Product Specifications

Typical Materials		
1	Body	316SS
2	Gaskets	PTFE
3	Lining/Seat	Ceramic
4	Ball	Ceramic
5	O-Rings	Viton
6	Packing	PTFE
7	Yoke	304 SS
8	Stem	Hastelloy

Additional Material selections available  
Standard Valves rated to 400F (204C)

## Style Q Ceramic Lined Ball Valve



Dimensions (Inches, Class 150)										
Size		½"	¾"	1"	1-1/2"	2"	3"	4"	6"	8"
Face to Face	L	4.25	4.62	5.00	6.50	7.00	8.00	9.00	15.50	18
Bore	d1	½	¾	0.98	1.58	1.97	2.56	3.15	4.92	5
Flange	OD	3.5	3.88	4.25	5.00	6.00	7.50	9.00	11.00	13.5
Bolt Circle	BC	2.38	2.75	3.12	3.88	4.75	6.00	7.50	9.50	11.75
Raised Face	Od	1.38	1.69	2.00	2.88	3.62	5.00	6.19	8.50	10.62
# Bolts	N	4	4	4	4	4	4	8	8	8
Bolt Diameter	d	½	½	1/2	1/2	5/8	5/8	5/8	¾	¾
Weight	lb	10	12	16	29	38	67	116	222	295
Full Port Cv		23	44	84	128	250	444	643	1638	1664
Pressure	psi	275	275	275	275	275	220	220	150	100

Pressure ratings are limited by 150# class at ambient conditions.

Much higher pressures can be achieved with custom designs. Consult factory for details  
Dimensions are for Standard valves and may change as product enhancements take effect.

## SK Valve USA

Buffalo, NY

Ph: (716) 795-8111 FAX: (716) 799-0969

[www.skvalveusa.com](http://www.skvalveusa.com)

Q 9/14/09